

# Perfume Bottles Auction

Directed by Ken Leach  
Auctioneer: Nicholas Dawes

Friday, May 3, 2013

beginning precisely at 5:00 pm

25th Annual Convention  
International Perfume Bottle Association

The Tropicana Hotel  
3801 Las Vegas Blvd – South  
Las Vegas, NV 89109

*Preview May 3, 2013 from 1:00 pm to 5:00 pm*

Perfume Bottles Auction

Ken Leach  
1050 2nd Ave. #47  
New York, NY 10022 USA

*p:* 800-942-0550 *f:* 917-591-6645 *e:* ken@perfumbottlesauction.com  
[www.PerfumeBottlesAuction.com](http://www.PerfumeBottlesAuction.com)



**Cover illustrations:**  
Lot #161 (front), Lot #125 (back)

# The Conditions of Sale — *Please Read Carefully*

---

**Terms of Sale.** All items will be sold, in numerical sequence of this catalog, to the highest bidder as determined by the auctioneer. In the case of a disputed bid, the auctioneer shall have sole discretion in determining the purchaser and may also, at his election, withdraw the lot or reoffer the lot for sale. The auctioneer has the sole and exclusive power, discretion, and authority to regulate the bidding and its increments.

Bidding increments:

\$10 until \$100 is reached	\$500 until \$10,000 is reached
\$25 until \$500 is reached	\$1,000 until \$20,000 is reached
\$50 until \$1,000 is reached	\$2,500 until \$40,000 is reached
\$100 until \$3,000 is reached	\$5,000 until \$100,000 is reached
\$250 until \$5,000 is reached	\$10,000 thereafter

**Estimates and reserves.** Price estimates are purely that, an estimate or opinion reflecting the range in which the price may fall. Many items in the auction have a reserve, or a confidential minimum price below which the lot will not be sold. The reserve price is normally well below the low estimate and is never allowed to be higher than the estimates.

**Buyer's Premium.** A buyer's premium of 20% will be added to the hammer price of all lots, to be paid by the buyer as a part of the purchase price.

**Absentee Bids.** We welcome your absentee bidding and will make every effort to execute your bid as if you were present at the auction. In the case of duplicate bids the earliest dated submission takes precedence, so it is advantageous to submit your bids as early as possible. Absentee bid forms are available in this catalog or by request, and must be submitted no later than 48 hours prior to the auction. No bids will be accepted after that time. Please do not call while the auction is in progress, as we need our phones for bidding.

**Telephone Bids.** Telephone bids will be accepted for items with a low estimate of at least \$500.00, and you must be willing to bid up to the low estimate, if the bidding should reach that point. Phone requests must be submitted no later than 48 hours prior to the sale. Please use the same absentee bid form in this catalog and indicate "phone bid". We offer phone and absentee bidding services as a convenience, but will not be responsible for errors or failures to execute bids.

**Payment.** We accept cash, traveler checks, bank wire transfer, credit card or check for payment. We retain the right to hold merchandise paid for by check, until the check has cleared the bank. Payment is expected within seven calendar days of the sale.

**Sales Tax.** All purchases are subject to the Las Vegas 8.1% sales tax unless a valid Las Vegas tax exemption form has been filed with us. We will require a copy of your Las Vegas business license for our file.

**Shipping.** We will pack and ship worldwide using UPS and Fed-Ex. The purchaser is responsible for and agrees to pay all actual costs of handling, shipping, insurance and duties that may be imposed.

**Condition of Lots.** It is the buyer's sole responsibility to be knowledgeable about the condition of the property before bidding. In each lot we have endeavored to offer items in good, original condition, and any negative aspect has been noted, but some exceptions apply. It could be possible there are tiny chips around the opening where the stopper enters the bottle, on the edge of the stopper plug, or on the base of the bottle. Typically, boxes and labels of commercial bottles will show varying signs of age and usage, and could be frayed, weak or discolored. From manufacturing, some Czechoslovakian bottles and stoppers may not fit snugly or display perfect symmetry. Therefore, while we have examined and attempted to describe the condition of each lot of this auction as accurately as possible, as in all auctions, the lots here are sold "as is" and therefore we highly encourage you or an agent to examine the items you intend bidding on prior to purchase. Catalog descriptions, condition reports, and bill of sale are a statement of qualified opinion and not a representation or warranty.

*Bidding on any item indicates your acceptance of these terms and all other terms announced at the time of the sale whether bidding in person, through a representative, by phone, by Internet, or other absentee bid.*



I c1900 Boucheron-Paris, Art Nouveau pendant  
scent bottle, sterling silver amphora, 3 applied birds, mesh  
tassel, hinged cap with 4 opals, gilt interior; crystal vessel  
and stopper; hung from silver chains joined by a fire opal.  
Boucheron mark, 2 silver marks, silversmith's mark.  
Pendant 1 5/8 in. Total length 23 in.

\$6,000-\$8,000

**Previously owned by:** Louise Vava Lucia Henriette Le Bailly  
(Lou Lou) de la Falaise – daughter of Schiaparelli model  
Maxime, and Count Alian Le Bailly de La Falaise.

2 c1850 Palais Royal, scent casket, gilt brass, set with large pearl shells, upper compartment with ring-hooks, lower holding four Baccarat crystal perfume bottles, hinged metal tops (lacking inner stoppers). Bottles 3 1/2 in., Case 14 in.  
\$2,000-\$3,000



3 19th century Samson "The Bawdy Monk" scent bottle, glazed porcelain, metal stopper fittings. Gold bee mark. \*Based on folktale, the monk returns from market with eggs, a chicken and a girl hidden in wheat sheafs. 3 1/8 in.  
\$1,800-\$2,000

3





4



**4** 19th century scent bottle, paneled crystal, hand chased 18K gold mount, hinged cap set with emeralds and rubies (lacks stopper), original fitted box. 4 1/4 in.

\$3,000-\$4,000

5



**5** c1850 Palais Royal perfume chest, hand tooled silver; gilt bronze, original key, holds two green opaline crystal perfume bottles, stoppers, gilt metal hinged mounts framing architectural landmarks under glass. Bottle 2 7/8 in.

\$1,500-\$2,000





6

6 19th century French perfume chest, gilt metal, champlévé enamel (minor loss), bevel glass window, 2 matching metal bottles, hinged covers, stoppered glass liners. Bottle 2 in.  
\$1,500-\$2,500

7 c1820 English Battersea enamel perfume chest, gold flowers on cobalt ground, 2 harbor scenes, 3 floral panels (minor craze on side), gilt metal mount, 3 stoppered crystal bottles. Box 2 1/2 in.  
\$1,500-\$2,000

8 c1780 English Battersea enamel scent bottle and bonboniere, floral and pastoral motifs (minor crazing, one small glaze loss), gilt metal mounts and figural stopper: 3 3/4 in.  
\$1,200-\$1,500



7



8





9



9 c1880 French enamel scent bottle, image of girl with watering can, silver mounts, inner stopper. Hallmarked. 2 3/4 in.  
\$1,000-\$1,200

10



10 c1900 French scent bottle, carved quartz crystal, engraved silver mount, cover enamel of girl with bird and cage, inner stopper. Hallmarked. 2 3/4 in.  
\$650-\$850

11 c1900 Tiffany & Co. scent bottle, deeply cut crystal, 14K gold pressure cap. Tiffany and gold marks. 5 1/2 in.  
\$3,500-\$4,000

11



12



12 c1850 Palais Royal, Baccarat scent casket, engraved clear/frost crystal, gilt bronze mounts and interior framework holding two crystal perfume bottles, stoppers (one frozen). Bottles 3 in. \$2,500-\$3,500



13 c1900 European scent bottle, faceted clear crystal, 9ct "garnet-gold" mount set with cut and cabochon garnets, inner stopper. 2 3/4 in. \$550-\$650

14 19th century Philip Freres vinaigrette and scent bottle, carved quartz crystal, finely detailed gold mounts, pressure perfume cap with flower finial and wreath border; vinaigrette cover with classic edge and pierced screen. French gold and maker marks. 3 1/8 in. \$3,000-\$4,000



14



13





15



**15** 1883 English art glass scent bottle, cased cranberry crystal, enameled Japanese motif, stopper, hinged silver cover; box. HTB, date, and London marks. 10 3/4 in.  
\$3,500-\$4,000

**16** c1900 Galle cameo glass atomizer; white glass with violet overlay (amber color from old perfume). Carved Galle mark. 4 1/2 in.  
\$1,500-\$2,000



16

**17** c1900 Daum perfume atomizer, cased cranberry cameo glass, gilt detail, hand-tooled silvered hardware (functional pump, refillable) TM mark. Carved Daum-Nancy mark. 3 5/8 in.  
\$550-\$650

**18** c1900 Daum "Clair de Lune" art glass, perfume bottle, cased opal glass, black enameled pastoral scene on textured surface, frost stopper. Daum-Nancy mark. 4 in.  
\$2,000-\$3,000



17



18

19



19 c1850 Palais Royal scent casket, decorated porcelain, bronze mounts, velvet interior holding six Baccarat crystal perfume bottles (4 stoppers), beautifully enameled hinged brass covers. Bottles 2 1/8 in. \$3,000-\$4000

20 1829 Birmingham vinaigrette, sterling silver, gilt detail, hinged lid and pierced grill. LV&W maker mark, silver and date marks. 1 in x 1 3/8 in. \$450-\$650

21 1880's English perfume bottle, enameled sterling silver; hinged cover. Hallmarked. 3 3/4 in. \$1,500-\$2,000



20



21



22



**22** c1880 French scent bottle, hand cut quartz crystal, 18K gold mount, inner stopper. Eagle hallmark. 4 in.

\$1,500-\$2,000

**23** c1880 French perfume chest as a gilt metal carriage, glass windows and bevel edged cover, velvet lining, 4 crystal bottles, facet stoppers. 3 1/2 in.

\$800-\$1,000

23



24



**24** c1850 Palais Royal scent casket with key, carved marble, elaborate bronze mounts, malachite studs, satin interior; holding two Baccarat crystal bottles, stoppers, threaded necks, brass caps. Bottles 3 5/8 in.

\$1,500-\$2,500



26



25



27



27 c1870 unusual European scent bottle and patch box, cobalt glass, inner stopper, engraved silver screw cap, hinged base lid, inset cut cobalt glass. Hallmarked. 4 1/2 in. \$600-\$800

28 18th century Dutch vinaigrette, engraved silver, interior screen pierced with moon and star shapes. Engraved "Anna." Dutch hallmarks. 1 1/8 in. x 1 7/8 in. \$350-\$550



28

25 c1900 American perfume bottle, fancy cut crystal, stopper, hinged silver cover with amethyst stone, ornate silver tripod holder. Sterling mark. Minor chips. 9 1/2 in. \$1,000-\$1,500

26 1900s Tiffany & Co. Belle Epoque sterling silver scent bottle, threaded cap on chain, shaped to hand carry. Tiffany, and silver marks. 5 in. \$800-\$1,000



**29** 1898 English scent bottle and screw cap, sterling silver; nugget form, recessed hand hammered flower shapes. English silver marks, date registry mark. 2 3/4 in.  
\$200-\$300

29



**30** c1880 Mauser chatelaine scent bottle, sterling silver; pierced screw cap with hanging ring, Mauser silver mark. 4 3/8 in.  
\$200-\$300

30



**31** c1900 Tiffany & Co. chatelaine perfume bottle, repoussé sterling silver; figural screw cap. Tiffany and silver marks. 4 1/4 in.  
\$750-\$950

31



32



**32** c1880 Gorham vanity bottle with stopper; fine heavy crystal, sterling silver collar and hinged openwork cover; set with large faceted amethyst. Gorham silver marks. 4 3/4 in.  
\$650-\$850

**33** 1900s European scent bottle, enameled porcelain, relief molded figures, metal screw cap. 3 1/2 in.  
\$450-\$550



33

34



35



36



37



38



**34** c1900 Webb cameo glass perfume bottle, blue glass, carved white overlay, silver screw cap. Webb mark, sterling mark., 4 in.  
\$1,800-\$2,000

**35** c1900 Bohemian, Palais Royal-style perfume set, 4 bottles and stoppers, clear crystal, metal holder; mirror plateau, enameled blue-green crystal umbrella. Bottle 2 1/4 in.  
\$650-\$750

**36** c1935 Marcel Franck 3 piece vanity set, blue-green glass, metal labels and fittings include a "Super-Fizz" atomizer head. Marked Marcel Franck. Tallest 7 3/4 in.  
\$300-\$400

**37** c1900 Art Nouveau chatelaine perfume bottle, screw top, light purple enamel on machined silver, floral motif. Silver mark. 2 1/8 in.  
\$500-\$600

**38** c1900 paperweight perfume bottle, turquoise crystal, enameled detail, faceted clear paperweight stopper. 7 3/4 in.  
\$400-\$600

39



**39** 1884 Webb cameo art glass scent bottle, satin finish lemon yellow crystal, hand cut white casing, inner stopper, silver cap marked SM, London hallmark 1884. 10 1/4 in.  
\$3,000-\$4,000

40



**40** 19th century French opaline perfume bottle and stopper, cased crystal, white cut to clear, applied pink crystal serpent, enamel and gilt detail. 7 1/2 in.  
\$600-\$800

41



**41** c1840 French set of blown glass bottles, 6 small with labels, one larger with applied handles and decoration. Elaborate Dragee style box, seed pearl and gold wire under domed glass cover. Largest 2 1/4 in.  
\$1,000-\$1,200

**42** Late 19th century Palais Royal perfume bottle, cased ruby crystal, pierced and engraved gilt metal mount set with 5 shell cameos depicting women in countryside. No inner stopper: 5 3/4 in.  
\$2500-\$3500

**43** 1900s Bohemian perfume bottle and stopper, cased green crystal cut to clear, finely scrolled gold detail over all, fused/suspended in crown-shape holder. Minor chips to points on foot. 6 3/8 in.  
\$2,000-\$3,000

42



43



44



44 c1900 Bohemian perfume bottle and stopper, flashed crystal, red cut to clear. 5 1/2 in. \$150-\$250

45



45 1910s Steuben perfume bottle, iridescent "verre de soie" glass, pink "jade" dauber-stopper. 4 1/2 in. \$450-\$650

46



46 1920s Moser-Czech perfume bottle and stopper, dark green crystal, gilt bands with fish motif. Moser mark. 10 1/8 in. \$450-\$650

47



47 1927 French atomizer, glazed porcelain, metal fittings. Marked Artysse – Made in France. 4 1/2 in. \$800-\$1,000

48 1920s Bohemian dagger shape scent bottle, cased cranberry crystal, raised enamel detail, brass fittings (no stopper). 6 3/4 in. \$800-\$1,000

48





49



**49** 1920s French Rimmel mini compact, gilt metal, inset of foil backed crystal, perfect mirror; unused puff. Marked Rimmel – Made in France. Tiny edge chip (see photo). Diam. 3/4 in.  
\$200-\$300

**50** 1920s French compact, gilt metal, foil backed green glass cover, beveled mirror. Diam. 2 1/2 in.  
\$250-\$350

50



51



**51** 1920s Austrian atomizer; cased cranberry crystal, panel cut with applied crystal jewels, enameled gilt mounts. Marked Austria. 8 3/8 in.  
\$750-\$950

**52** 1890s French miniature sedan chair display case painted wood, embroidered floral silk interior; beveled glass windows, 2 glass shelves. Signed B. Herrmann 1897. 14 in.  
\$400-\$600

52



Top



Back

53



53 1928 DeVilbiss atomizer; engraved peach tone glass, gilt stem and hardware. 7 3/4 in.  
\$450-\$550

54



54 1930 DeVilbiss atomizer, clear glass, enameled decoration, gilt hardware., DeVilbiss mark. 6 1/4 in.  
\$350-\$450

55



55 1930 DeVilbiss atomizer; pink glass, gold decoration, gilt hardware, amber Bakelite head. Rare. 4 1/2 in.  
\$450-\$650

56



56 1926 DeVilbiss atomizer and matching tray, frost glass, enameled and gilt decoration, gilt hardware. 6 3/4 in.  
\$400-\$600

57



57 1926 DeVilbiss Imperial atomizer; clear glass, interior blush of pink to blue, jeweled gilt metalwork, original hardware, hose and ball. Marked DeVilbiss. 6 1/2 in.  
\$2,500-\$3,500

58



59



58 1926 DeVilbiss atomizer; black glass, silvered metal stem and hardware. 7 in. \$400-\$600

59 1920s Galeries Lafayette "Terre de Retz" powder box, painted composition cover, black cardboard box. Signed G. Duchesne. 7 1/4 in. \$500-\$600

60 1920s Argilor figural, perfume lamp, decorated porcelain, wooden base, original wiring. Signed Argilor. 9 1/4 in. \$1,000-\$1,200

61 1926 DeVilbiss atomizer; glass with black interior; enameled and gilt decoration, gilt hardware, deluxe head. 10 in. \$1,000-\$1,500

60



61



62 1940s Marcel Rochas *Femme* compact, silvered metal, impressed design, bevel mirror; puff, suede case. 3 1/2 in. \$100-\$200



63 1930s Italian lipstick, enameled silver, pop-up mirror. Silver mark and registry marks. After 1621 Guercino fresco, "Aurora," Rome. 2 1/4 in. \$200-\$300

64 1920s powder box, light blue marbled plastic, dimensional caricature image of Josephine Baker. Marked Made in England. Diam. 3 3/4 in. \$100-\$200

65 1921 German, Mercedes radiator grill compact, made of Platinin (nickel alloy more durable than silver), perfect mirror; original unused puff. 2 in x 1 1/2 in. \$650-\$750

66 1960s Elizabeth Arden lipstick, hand decorated metal. Impressed Elizabeth Arden, Mexico in paint. 4 in. \$100-\$150



67



68



69



**67** 1947 Volupte "Caged Butterfly" compact, mirror and puff unused. Volupte mark. Diam. 2 7/8 in.  
\$200-\$300

**68** 1940s Wadsworth "Ball and Chain" compact and lipstick, polished brass, screen, puff, box. Unused lipstick. 2 in.  
\$100-\$150

**69** 1930s Lucien Lelong lipstick case, gilt metal, cased in thick beveled mirrors, Lelong logo. 2 1/8 in.  
\$150-\$200

**70** 1940s Birmingham, Evans Components Ltd., "Le Rage" compact, perfect mirror and unused puff. Marked Le Rage - Made in England. 3 in x 3 in.  
\$200-\$300

70



**71** 1942 Frances Denny "Do Re Mi" novelty lipsticks, enameled metal cover; mirror - polished metal interior. 1 1/2 in. x 1 7/8 in.  
\$100-\$200



71



**72** 1950s Rex 5th Ave. compact, Miami beach scene, enameled gilt metal, mirror; puff, strainer. Marked Made in USA. 4 in. \$200-\$300

**75** 1920s French compact, engraved and painted black celluloid, celluloid sifter; mirror. 2 7/8 in. \$300-\$400

**73** 1920s Austrian compact, gold washed sterling silver; enameled detail. Sterling and Made in Austria mark. Diam. 2 3/4 in. \$350-\$450

**76** 1920s French compact, enameled metal, mirror; screen, minor spotting face and neck. 2 5/8 in. \$300-\$400

**74** 1920s Austrian compact, sterling silver; minor scratching to back. Sterling and Made in Austria mark. Diam. 2 1/2 in. \$450-\$650



72

73



74



75



76



77



78



79



80



**77** 1920s German figural atomizer; decorated porcelain, metal fittings. Figure 4 1/2 in. \$350-\$450

**78** 1920s Etling-Paris powder box; decorated porcelain, a cupid with quiver on back, balancing "Love" on his forehead. Maker and Etling marks. 4 1/2 in. \$550-\$650

**79** 1920s Noritake perfume bottle and stopper; hand painted porcelain, porcelain dauber; cork seal. Noritake "M" mark. 5 1/2 in. \$200-\$400

**80** 1920s French atomizer; decorated porcelain, metal fittings. Marked Paradis-Paris. Figure 8 1/2 in. \$950-\$1,250

**81** 1920s "Mickey Mouse" perfume bottle and stopper (cork plug), luster glazed porcelain. Made in Japan marks. 4 3/4 in. \$550-\$650

81



82



83



**82** 1926 Hoffmann-Czech vanity tray, blue crystal, molded nudes, roses, and stars, figural powder and rouge covers, lipstick tray. Length 9 1/4 in. \$2,000-\$4,000

**83** 1920s Czech purse perfume bottle, clear crystal, jeweled gilt metal filigree cage and screw cap (edge corrosion; dauber), box. Czech in metal. 2 5/8 in. \$100-\$150



84



85



86



**86** 1930s Czech perfume bottle and stopper, deep yellow crystal, dauber stub, unique hand cut finish. MIC in circle. 6 3/4 in.  
\$650-\$850

87



**84** 1920s Ingrid-Czech "Pompadour" lipstick, black crystal, frost blue cover, metal fittings. Molded Czechoslovakia. 2 3/4 in.  
\$500-\$600

**85** 1930s Irice-Czech perfume bottle, clear/frost yellow crystal, intaglio crystal stopper, dauber. MIC in circle, MIC paper label, Irice label. 8 1/4 in.  
\$450-\$650

**87** 1920s Czech perfume bottle, clear crystal, intaglio stopper with pink/blue patina, dauber; jeweled metalwork marked Czech. MIC in circle. 8 1/2 in.  
\$2,000-\$3,000

**88** 1920s Hoffmann-Czech perfume bottle, black crystal, intaglio vaseline crystal stopper, dauber stub, enameled metal filigree, opal jewels all around. Hoffmann butterfly on stopper. 4 3/4 in.  
\$2,000-\$3,000

88



89



**89** 1920s Czech perfume bottle and fan stopper; cut crystal, dauber, lavish gilt filigree metalwork with large faux lapis jewels. Length 8 in. \$2,500-\$3,500

**90** 1920s Czech perfume bottle, pink crystal, clear/frost openwork stopper; dauber stub. 8 in. \$2,000-\$3,000

90



**91** 1920s Czech perfume bottle, blue crystal, clear intaglio stopper; jeweled gilt metalwork. Czechoslovakia in line, and on metal. 6 3/4 in. \$550-\$650

91



**92** 1920s Hoffmann-Czech perfume bottle and intaglio stopper; pink crystal, pink dauber, gilt metal work with jewels and cameo both sides. Molded butterfly mark; metal marked Austria. 6 3/4 in. \$2,000-\$2,500

92



**93** 1920s Czech perfume bottle, blue crystal, clear intaglio stopper; enameled jeweled gilt metalwork. MIC in oval, and on metal. 6 3/8 in. \$450-\$650

93



94



95



**94** 1920s Czech perfume bottle and intaglio stopper, pink crystal, dauber, enameled jeweled metal holder (same both sides). 4 1/4 in. \$3,500-\$4,000

**97** 1920s Czech perfume bottle, pink crystal, clear tiara stopper (dauber). MIC in oval. 5 1/2 in. \$300-\$400

**95** 1920s Czech perfume bottle, blue crystal, clear/frost tiara stopper (dauber), Minor chip to base edge point. MIC in lines. 4 3/4 in. \$550-\$650

**98** 1920s Czech perfume bottle, blue crystal, clear double intaglio stopper (dauber), enameled jeweled metalwork. Lacking one shoulder jewel. Small inner flaw over upper dog head. MIC in oval, and on metal. 4 1/2 in. \$450-\$650

**96** 1920s Czech perfume bottle, blue crystal, clear intaglio stopper (dauber stub), fleabites on some points. MIC in oval. 6 in. \$400-\$600

96



97



98



99



**99** 1930s Czech perfume bottle and intaglio stopper; amethyst crystal, dauber, jeweled gilt metalwork marked Czech. Czech in line. 5 3/4 in.  
\$1,200-\$1,400

100



**100** 1920s Czech perfume bottle and intaglio stopper; pink crystal, gilt metal work, porcelain plaque. Czechoslovakia in lines. 8 1/8 in.  
\$1,000-\$1,500

101



**101** 1920s Czech perfume bottle and stopper; pink crystal, dauber stub, jeweled enameled gilt metal filigree marked Czech. Czech in oval. 4 3/4 in.  
\$800-\$1,000

**102** 1920s Czech perfume bottle and "thistle" dauber-stopper; pink crystal, jeweled metal filigree marked Austria. Bottle unmarked. 7 in.  
\$2,000-\$3,000

**103** 1920s Hoffmann-Czech perfume bottle, stopper and dauber, bright green crystal, jeweled (front and back) metal holder marked Czech. 5 1/2 in.  
\$1,800-\$2,000



102

103



104



105



106



107



**104** 1920s Czech perfume bottle and stopper (dauber), clear crystal, jeweled gilt metalwork. MIC in circle, and on metal. 8 1/2 in.  
\$650-\$750

**105** 1920s Czech perfume bottle, clear crystal, intaglio stopper; jeweled metal filigree. MIC in oval, and on metal. 5 3/4 in.  
\$550-\$650

**106** 1920s Czech perfume bottle and stopper; clear crystal, enameled and jeweled gilt metalwork. MIC in lines and on metal. 9 in.  
\$1,000-\$1,500

**107** 1920s Czech perfume bottle and stopper; pink crystal, dauber; jeweled enameled gilt metal filigree. 4 1/4 in.  
\$300-\$400

**108** 1920s Hoffmann-Czech perfume bottle and intaglio stopper; amber crystal, dauber; gilt metalwork jeweled all around, miniature portrait. Hoffmann mark. Metal marked Austria. 5 1/4 in.  
\$2,000-\$2,500



108



109

**109** 1920s Czech perfume bottle and stopper, amethyst crystal, dauber; enameled gilt metalwork framing miniature painting on ivory. Metal marked Austria. 7 1/4 in.  
\$2,500-\$3,500

**110** 1920s Czech perfume bottle, amethyst crystal, clear/frost stopper (loose fit), enameled and jeweled gilt metal filigree. MIC in oval, in circle, and on metal. 7 1/4 in.  
\$1,500-\$2,500

**111** 1920s Czech perfume bottle, amethyst crystal, figural stopper molded both sides, dauber; jeweled lacquered metal filigree marked Czech. Czech in line, MIC in oval. 7 in.  
\$2,000-\$3,000



110



112

**112** 1920s Czech perfume bottle and intaglio stopper; amethyst crystal, dauber stub, jeweled gilt metal filigree. 5 in.  
\$400-\$600



111



113

**113** 1920s Czech perfume bottle, amethyst crystal, figural stopper molded both sides, dauber; jeweled lacquered metal filigree. Czech in line. 6 in.  
\$1,800-\$2,000

114



115



116



117



**114** 1930s Czech perfume bottle and openwork stopper (dauber stub), malachite crystal, metalwork, Bakelite roses. Czech in metal, MIC in oval. 8 1/2 in.  
\$600-\$800

**115** Czech perfume bottle, amethyst crystal, intaglio stopper; dauber stub, jeweled gilt metal filigree. Aristo label. MIC in line. 4 3/4 in.  
\$300-\$400

**116** 1920s Hoffmann-Czech perfume bottle, malachite crystal, open-work crystal stopper with dauber, jeweled enameled metalwork marked Czech. 8 1/4 in.  
\$1,200-\$1,400

**117** 1920s Hoffmann – Czech perfume bottle and figural stopper; rare hyacinth crystal, dauber stub. 6 in.  
\$600-\$800

**118** 1920s Czech perfume bottle, amethyst crystal, intaglio stopper; dauber; carved ivory and glass jewels, gilt metal filigree marked Czechoslovakia. 5 1/2 in.  
\$1,000-\$1,500

118



119



**119** 1920s Czech perfume bottle, black crystal, clear stopper; dauber; gilt metal filigree, pink crystal jewels. MIC in oval (faint). 2 1/2 in. \$200-\$400

120



**120** 1920s Czech perfume bottle, black crystal, clear stopper; dauber; gilt metal filigree, green crystal jewels. MIC in oval. 2 1/2 in. \$200-\$400

121



**121** 1920s Hoffmann-Czech perfume bottle, black crystal, frost detail, rare intaglio stopper; malachite crystal, green dauber. Hoffmann mark. 4 1/4 in. \$650-\$850

**123** 1920s Czech atomizer, black crystal, gilt metal hardware and holder; pink crystal jewels. Marked Austria. 8 in. \$3,000-\$4,000

**124** 1920s Czech mini perfume bottle, black crystal, clear stopper; dauber; enameled jeweled gilt metal filigree. MIC in oval, and on metal. 3 1/2 in. \$300-\$400

122



**122** 1920s Czech perfume bottle, black crystal, malachite crystal stopper; jeweled gilt metalwork. MIC in lines. 5 3/8 in. \$1,500-\$2,500

124



123





125



126



127



128



129



**125** 1920s Czech perfume bottle, black crystal, clear/frost stopper; dauber. 8 in.

\$3,000-\$4,000

**126** 1920s Hoffmann-Czech perfume bottle, black crystal, frost detail, "knot" stopper; opal-lavender crystal, dauber (repair to plug). Hoffmann mark. 4 1/4 in.

\$350-\$450

**127** 1920s Czech perfume bottle, black crystal, clear stopper; gilt metal filigree, Bakelite and crystal jewels. MIC in line, Aristo label. 7 3/4 in.

\$400-\$600

**128** 1920s Czech perfume bottle, black crystal, clear intaglio stopper (loose fit), enameled jeweled gilt metal filigree. MIC in oval, and on metal. 6 3/4 in.

\$400-\$600

**129** 1920s Hoffmann-Czech perfume bottle, black crystal, frost dauber-stopper; two-tone gilt metalwork, champlève enameled details. 6 3/4 in.

\$3,000-\$4,000

**130** 1930s Czech perfume bottle, black crystal, red crystal stopper; dauber, jeweled enameled metalwork marked Czech. MIC in lines. 5 1/4 in. \$1,000-\$1,500

**131** 1920s Czech perfume bottle, red crystal, clear/frost tiara stopper. MIC in circle. 5 3/4 in. \$650-\$850

**132** 1920s Czech perfume bottle, black crystal, clear intaglio stopper; dauber stub, jeweled lacquered metal filigree marked Czech. Czech in oval. 5 1/2 in. \$850-\$1,000

**133** 1930s Ingrid-Czech "Siesta" pattern, perfume atomizer; frost crystal, silvered metal hardware. 6 in. \$1,000-\$1,500

**134** 1920s Czech perfume bottle, clear crystal, red intaglio stopper. 4 1/2 in. \$100-\$200

130



131



132



134



133

135



136



137



138



139



140



**135** 1920s I. Rice-Czech perfume bottle, black crystal, figural frost crystal stopper. 5 1/4 in.

*\$1,800-\$2,000*

**136** 1930s Czech perfume bottle and stopper; wheel cut clear crystal, dauber. MIC in oval, twice. 1 5/8 in.

*\$150-\$250*

**137** 1930s Czech perfume bottle and stopper; clear/frost crystal. MIC in oval. 3 1/4 in.

*\$100-\$200*

**138** 1920s Czech powder box, deep red crystal, frost cover deeply molded leaf motif. MIC in oval. Diam. 4 3/8 in.

*\$650-\$750*

**139** 1930s Czech perfume bottle, frost black crystal, double intaglio crystal stopper; dauber stub. MIC in circle. 5 in.

*\$400-\$600*

**140** 1920s Ingrid-Czech perfume bottle, black crystal, frost crystal openwork stopper; Ingrid MIC mark. 7 in.

*\$800-\$1,000*

**141** 1923 Jovoy *Severem* figural perfume bottle, clear glass, figural frost stopper: 5 5/8 in. \$600-\$800

**142** 1939 Schmidt-Czech *D'Astra* perfume bottle and stopper; clear crystal, brown enamel patina, black edged windows. 5 1/4 in. \$400-\$600

**143** 1939 Schmidt-Czech *D'Astra* perfume bottle and stopper; clear crystal, brown enamel patina, black edged heart-shape windows, box. 4 1/2 in. \$450-\$550

**144** 1939 Schmidt-Czech perfume bottle and stopper (dauber), clear crystal, brown enamel patina, black edged windows. 3 in. \$450-\$550

**145** 1924 Jovoy *Hallo CoCo* perfume bottle, clear glass, enameled figural stopper. 4 1/4 in. \$3,500-\$4,000



141



142



145



144





146

**146** 1920s Czech perfume bottle, clear crystal, matching figural stopper; charcoal enamel detail. MIC in lines. 3 1/4 in.  
\$2,000-\$3,000



147

**147** 1920s Vantines boxed set, *Java Lily* perfume bottle and stopper; frost glass (glass plug), label, unused powder and rouge (needlework cover). Needlework box (torn lid edge). 4 1/4 in.  
\$350-\$450

**149** 1930s Darnee Narce perfume bottle and stopper in glass, black enamel detail, label. 4 in.  
\$350-\$450

**150** 1920s Vantines *Hana Violet* perfume bottle and stopper; clear glass, fabric, soutache trim, and Peking glass decoration, label, box with glass bead closure. 2 3/4 in.  
\$250-\$450



148

**148** 1922 Vantines powder and rouge, stacked boxes, black silk and soutache, Peking glass ornament, carved ivory finial, original puffs. 2 1/4 in.  
\$350-\$450



149



150



**151** 1920s Elesbe *Origan* perfume bottle, blown glass, metal capped cork stopper, painted cloth wings, label, box with butterfly label. Bottle 2 3/4 in.  
\$450-\$650

**152** 1920s Hetra-Czech Holman perfume display, fitted with 27 blown glass bottles (specific spaces for 28) 3 with fabric accents, cork stoppers, labels. Wooden miniature "Victrola" cabinet, silk lining and ribbons (some distress), carousel revolves manually. A Rochambeau import. Closed 14 1/2 in., Largest bottle 2 1/4 in.  
\$2,500-\$3,500

152





153



154



155



156



157

**153** 1930s French perfume bottle and stopper; gilt and enameled glass. 5 1/2 in. \$400-\$600

**154** 1920s Czech – Hetra, for T. Eaton (Canadian Dept. Store) *Carnation* figural perfume bottle, blown glass, label, box with matching label. Length 3 1/2 in. \$200-\$400

**155** 1920s *Oeillet* perfume bottle, clear glass, plastic screw cap, label. 4 3/4 in. \$300-\$400

**156** 1910 *Dralle Illusion* perfume bottle and stopper; clear glass (dauber), silvered metal “lighthouse” case, box. Bottle 3 1/4 in. \$250-\$350

**157** 1920s French perfume bottle and dauber-stopper; clear glass, carved and painted celluloid case. Case 3 3/8 in. \$100-\$150

**158** 1920s Hetra-Czech perfume bottle, blown green glass, applied black and red glass details. 4 3/4 in. \$300-\$400



158

159



**159** 1922 Myrurgia *Suspiro de Granada* perfume bottle and stopper; black glass, gilt detail, cord sealed, label, plastic box with pom-poms, outer box. Rare small size. 2 1/4 in. \$2,000-\$3,000

160



**162** 1920 Babani *Ambre de Delhi* perfume bottle and stopper; clear glass, gilt and enameled decoration and labeling (some gold wear on shoulder; flea bites on stopper plug). 7 1/4 in. \$1,500-\$2,000

161



**160** 1920s Czech Ahmed Soliman perfume bottle set, 1 ruby crystal and 2 clear; with gilt and enameled detail, with green, clear, and amethyst faceted jeweled screw cap stoppers (daubers), metal fittings (two marked Czechoslovakia), 2 with labels (*Secret of the Desert, Omar Khayyam*). Leather box. 7 1/4 in. \$1,200-\$1,500

**161** 1924 Rosine *Arlequinade* perfume bottle, clear glass, gilt detail, black glass stopper; label, original tassel. 6 in. \$6,000-\$8,000

**163** 1926 Babani *Abdulla* perfume bottle, cover, and stopper; gilt black glass, enamel detail and bottom label. Manufactured surface crazing on cover interior and corners. 4 3/4 in. \$5,000-\$6,000

162



163





164



165



166



167



168



**164** 1920s Langlois *Duska* perfume gift set, two red glass bottles, black glass stoppers, labels, empty powder box, metal compact, mirror, puff, unused rouge. Largest 4 1/2 in. \$550-\$650

**166** 1928 Lionceau *Poeme Arabe* perfume bottle and stopper; black glass, ochre enamel recessed detail. 3 1/4 in. \$400-\$600

**165** 1924 Depinoix, Marcel Guerlain *Caravelle* figural perfume bottle and stopper; black glass, gold and silver gilt details, label, cord sealed, seldom seen box. 5 1/2 in. \$3,000-\$4,000

**167** 1925 Albersheim *Pacific* perfume bottle, opaque red crystal, black glass stopper; gilt detail, numbered. 4 in. \$800-\$1,000

**168** 1930s French figural perfume bottle and stopper; clear glass, gilt detail. Used by various perfumers. 4 1/4 in. \$300-\$400

170



169



169 1918 J.Viard, Institut de Beaute *Nuit Fleurie* perfume bottle, clear/frost glass with enameled embossed detail, figural stopper; blue patina, paper label. 4 in.  
\$4,500-\$5,500

170 1919 J.Viard-Depinoix, Du Barry *Blue Lagoon* perfume bottle and figural stopper; clear/frost glass, brown patina and enameled detail. Fleabite on base. 4 1/4 in.  
\$4,500-\$5,500

171 1924 J.Viard, Isabey *La Route d'Emeraude* perfume bottle and stopper; clear/frost crystal, grey patina, cord and wax seal, box. Molded J.Viard. 4 7/8 in.  
\$650-\$850

172 1920 J.Viard, Lubin *Eva* figural perfume bottle and stopper; clear/frost glass, sepia patina. 3 3/4 in.  
\$2,500-\$3,500

173 1925 J.Viard, Langlois *Shari* perfume bottle and stopper; enameled and gilt detail, grey patina, label. 3 3/4 in.  
\$8,000-\$10,000

173



171



172



174



175



**174** 1919 J.Viard, Baccarat, Ramses Ramses IV figural perfume bottle and stopper; clear/frost crystal, grey patina. Baccarat mark. 4 3/4 in. \$6,000-\$8,000

176



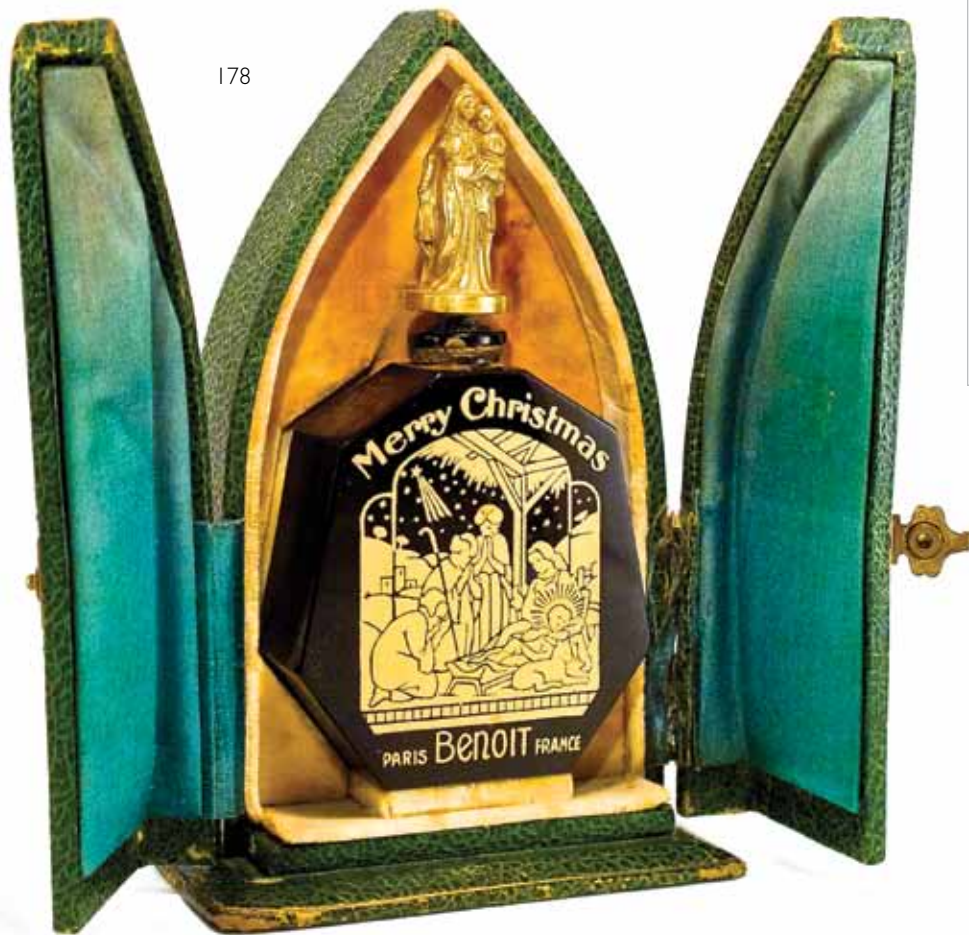
**175** c1920 Des Fleurs, Des Fruits figural perfume bottle and stopper; frost glass, multi color patina. 3 5/8 in. \$3,000-\$4,000

177



**176** c1920 J.Viard – Depinoix, Nogara Le Parfum Exquis perfume bottle and figural stopper; clear/frost glass, enameled detail. 4 5/8 in. \$7,500-\$8,500

**177** 1925 J.Viard, Bertelli Eva perfume bottle and stopper; frost glass, high relief, engraved label, gray patina. 4 3/4 in. \$8,000-\$10,000



178



179

**178** 1926 Benoit *Merry Christmas* perfume bottle, black glass, gilt figural stopper and labeling, arched box with marbled celluloid door panels. 4 3/4 in. \$2,000-\$3,000

**179** 1920s Deleltre "I" perfume bottle and stopper; clear/frost glass, gray patina, hang-tag label. 3 1/4 in. \$350-\$450

**180** 1925 J.Viard, Dubarry *Après la Pluie* perfume bottle and stopper; clear/frost crystal, grey patina. 3 5/8 in. \$450-\$650



180

**181** 1928 Depinoix, Benoit *Nuit de Paques* perfume bottle and stopper; black glass, gilt intaglio label and decoration, tassel box. 4 3/8 in. \$1,500-\$2,500



181

182



183



**182** 1915 Rigaud *Un Air Embaume* perfume bottle and stopper, clear/red-orange glass, red-orange patina, label, box. 4 1/4 in.

\$650-\$850

**183** 1920s Coty perfume bottle, clear glass, pierced Chinese silver mounts and screw cap. Molded Coty France. 5 in. \$550-\$650

**184** 1904 Baccarat, Guerlain *Parfum de Champs Elysees* figural perfume bottle and stopper, clear/frost crystal, hand finished turtle form, grey patina, label, box. Baccarat mark. 4 1/4 in. \$1,500-\$2,000

**185** 1922 Arys *Faisons un Reve* perfume bottle and stopper, clear/frost crystal, label. 2 3/4 in.

\$550-\$650

**186** 1927 J.Viard, Bryenne *Ambre Persan* perfume bottle and stopper (point chip), clear glass, blue patina, label, box (worn). 4 5/8 in.

\$1,500-\$2,000

184



186



185





187



188



**187** 1920s Coryse Rose d'Ispahan perfume bottle and stopper; clear/frost glass, rose patina, label. Drop-side box, silk and parchment rose. 5 in. \$3,000-\$4,000

**188** 1912 Depinox, Lubin Au Soleil perfume bottle and stopper; frost glass, enamel detail, molded label. 5 5/8 in. \$1,500-\$2,000



189

**189** 1922 Miro-Dena Rareniss perfume bottle, clear glass, enameled glass stopper, label, fabric box. 3 in. \$950-\$1,250

**190** 1913 Baccarat, Yardley Les Secret des Dieux perfume bottle, clear crystal, gilt engraved detail and labeling, frost stopper shaped as the mythical merlion. Baccarat mark. 4 1/2 in. \$4,000-\$6,000

190





191



192



193

**191** 1920 R. Lalique, *Arys Rien que du Bonheur* perfume bottle and stopper; clear glass, bead motif. Lalique mark, 4 1/4 in. \$500-\$600

**192** 1929 R. Lalique, *Forvil Narcisse* perfume bottle and stopper; clear glass, as a flower blossom. Molded R. Lalique mark. 2 5/8 in. \$800-\$1,000

**193** 1912 R. Lalique "Capricorn" perfume bottle and stopper; clear glass, recessed beetle motif, grey patina. Lalique mark. 3 1/8 in. \$2,500-\$3,500



195



194

**194** 1923 Roger et Gallet *Le Jade* perfume bottle and stopper; clear crackle glass, label. Box marked R. Lalique. 3 3/4 in. \$100-\$200

**195** 1914 R. Lalique, *Forvil Le Parfum NN* perfume bottle, cover, and inner stopper; black glass, molded label, ochre patina, box. Molded Lalique mark. 3 5/8 in. \$6,000-\$8,000



196

197



**196** 1920s R. Lalique, Houbigant *La Belle Saison* perfume bottle and stopper; clear/frost glass, sepia patina, sealed, label, keyhole drawer-slide box, silk thread tassels. Molded R. Lalique. 4 in. \$2,500-\$3,500

**197** 1920 R. Lalique, D'Orsay *Fleurs de France* perfume bottle, clear glass, frost stopper, brown patina, label. Lalique mark. 3 1/4 in. \$600-\$800

**198** 1920 R. Lalique, Maison Lalique "Hirondelles" perfume bottle, frost glass, clear stopper (frozen), pale blue patina, box. Lalique mark. Retailed by Rossello – sole distributor of Lalique in Uruguay. 3 1/2 in. \$10,000-\$12,000

198





199



200



**201** 1912 Baccarat/R. Lalique, D'Orsay *Violette* perfume bottle and cover; frost crystal, inner stopper; silver and gold finished bronze fittings with molded label. R. Lalique design. 5 3/8 in. \$2,500-\$3,500

201



**199** 1922 R. Lalique, Volnay *Chypre Ambre* perfume bottle, clear/frost glass, flower motif both sides (uncommon on Lalique bottles), sepia patina, box. Lalique mark. 4 3/4 in. \$3,000-\$4,000

**202** 1920 R. Lalique, Lubin *Lacdor* perfume bottle and stopper (frozen), clear glass, label. Lalique mark. 9 1/2 in. \$800-\$1,000

**200** 1920 R. Lalique, Arys *L'Amour dans le Coeur* perfume bottle and stopper; clear/frost glass, sepia patina, recessed cupid with bow. Molded Lalique mark. 3 7/8 in. \$450-\$550

**203** 1919 R. Lalique, Roger et Gallet *Psyka* perfume bottle, clear glass, frost stopper; butterfly label, butterfly motif box, interior silk shredded. 3 7/8 in. \$3,000-\$4,000

202



203



204



**204** 1919 R. Lalique, Maison Lalique "Fleurettes" perfume bottle and stopper; frost glass, sepia patina. Lalique marks. 6 1/4 in. \$800-\$1,000

205



**205** 1927 R. Lalique, Jay Thorpe *Jaytho* perfume bottle and stopper; frost glass, molded label, sepia patina. Molded R. Lalique. 4 in. \$500-\$800

**206** 1942 R. Lalique, Maison Lalique "Helene" perfume bottle and matching cover; clear/frost glass, inner stopper; sepia patina. Lalique mark. 9 in. \$1,000-\$1,500

206



207



**207** 1920s R. Lalique design, Coty *Styx* perfume bottle, clear glass, frost stopper; cord sealed, label, box. 4 in. \$250-\$350

**208** 1912 R. Lalique, D'Orsay powder box, frost crystal, original foil wrapped contents. Lalique mark. Diam. 3 3/4 in. \$300-\$400

208



209



210



**209** 1924 R. Lalique, Forvil *5 Fleurs* perfume bottle and stopper; clear glass, black patina highlighting recessed detail. Lalique mark. 4 in.  
\$2,500-\$3,500

**210** 1928 R. Lalique, Canarina *Les Deux Bleus* perfume bottle and dauber-stopper; blue glass, molded label and "eye" motif, molded Lalique mark. 2 in.  
\$3,000-\$4,000

211



212



**211** 1951 Marc Lalique, Morabito *No. 7* perfume bottle and stopper; opalescent butterscotch crystal, molded labeling. Lalique mark. Molded as 4 turtles for the Place Vendome luxury store. 8 3/4 in.  
\$4,000-\$6,000

**212** 1925 R. Lalique, Gabilla *La Violette* figural perfume bottle and stopper; clear glass shaped as a bunch of violets, enamel detail. Lalique mark. 3 1/4 in.  
\$3,500-\$4,000

213



214



215



216



217



**213** 1926 R. Lalique, Houbigant *Quelques Fleurs* powder box, clear/frost glass, label. Lalique mark. 2 1/4 in.  
\$300-\$400

**216** 1944 R. Lalique, Worth *Requete* perfume bottle and stopper; clear glass, blue enamel detail. Lalique mark. 3 1/2 in.  
\$400-\$600

**214** 1919 R. Lalique, Arys *Rose Sans Fin* perfume bottle and stopper; frost glass. Lalique mark. 3 1/2 in.  
\$600-\$800

**217** 1922 R. Lalique, D'Orsay *Le Lys* perfume bottle and stopper; clear glass, sepia patina, molded label. Lalique mark. 6 3/4 in.  
\$800-\$1,000

**215** 1927 R. Lalique, Jay Thorpe *Jaytho* perfume bottle and stopper; clear/frost glass, molded label. Lalique mark. 2 3/4 in.  
\$350-\$450

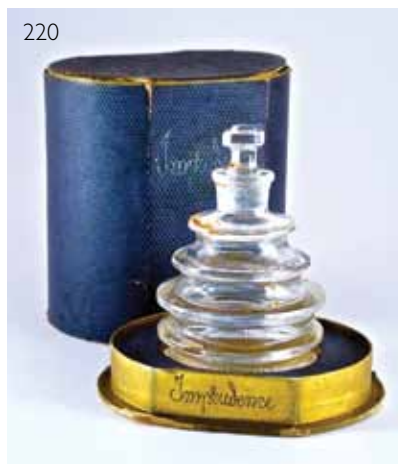
218



219



220



**218** 1920 R. Lalique "Pan" perfume bottle and stopper; frost glass, trace of blue patina, Lalique mark. 4 3/4 in. \$1500-\$2000

**219** Marc Lalique, Nina Ricci *Fille d'Eve* figural perfume bottle and stopper, frost and clear crystal, box. Lalique mark. 2 1/2 in. \$350-\$450

**220** 1938 R. Lalique, *Worth Imprudence* perfume bottle and stopper; clear glass, label, box. Lalique mark., 3 in. \$300-\$400

**221** 1950s Marc Lalique, "St. Germain" perfume bottle and stopper; clear/frost crystal. Lalique mark. 4 1/2 in. \$650-\$850

**222** 1938 R. Lalique, *Worth Imprudence* factice bottle and stopper; clear glass. Lalique mark. 9 in. \$1,000-\$1,500

221



222



223



**223** 1927 J. Viard, Rigaud Vers la Joie perfume bottle, clear glass, purple enamel, gilt trim, cobalt stopper, gold and grey luster cover. Viard mark. 2 1/4 in. \$650-\$850

**224** 1927 Baccarat, Piver Astris perfume bottle and stopper, opaque pink crystal, silver gilt detail, molded label. Baccarat mark. 4 1/4 in. \$4,500-\$5,500

**225** 1923 Ciro Bouquet Antique perfume bottle, clear glass, enameled stopper, label. 4 3/4 in. \$600-\$800

225



226



227



224



**226** 1922 Baccarat, Coty Idylle perfume bottle, clear crystal, silver metal label and screw cap, inner stopper. 3 1/2 in. \$200-\$300

**227** 1918 Baccarat, Violet Brise de Violet perfume bottle and stopper, clear crystal, gilt detail and labeling. Baccarat mark. Seldom seen box, printed "Veolay" for US stores. 4 3/8 in. \$400-\$600

228



229



232



230



231

**228** 1908 Baccarat, L.T. Piver *Astris* perfume bottle and stopper; clear crystal, molded label on metal mount, wooden box. 4 3/4 in.  
\$550-\$650

**229** 1930s Vallant *Black Tulip* perfume bottle, clear glass, frost black glass stopper; molded and paper labels, tassel box. 4 in.  
\$150-\$200

**230** c1920 Dralle *Tula* perfume bottle and stopper; clear/frost glass, enamel detail, rare paper label. 3 3/4 in.  
\$3,000-\$4,000

**231** 1920s Baccarat, Godet *Forget-Me-Not* perfume bottle and stopper; clear crystal, gilt detail, brass base, onionskin seal, label, box. Baccarat paper label. 5 1/2 in.  
\$550-\$650

**232** 1917 Baccarat, T. Jones *Veni-Vici* perfume bottle and stopper; clear crystal, gilt label, brass cover. 4 in.  
\$450-\$650

233



234



235



236



237



**233** 1923 J.Viard, Richard Hudnut *Pour Vous* perfume bottle and figural stopper; clear/frost glass, label. 5 1/4 in.  
\$2,500-\$3,500

**234** 1906 Guerlain *Après L'Ondée* perfume bottle and stopper; clear glass, gilt detail (tiny loss in drape-visible in photo), label, box (split hinge). 3 in.  
\$2,000-\$3,000

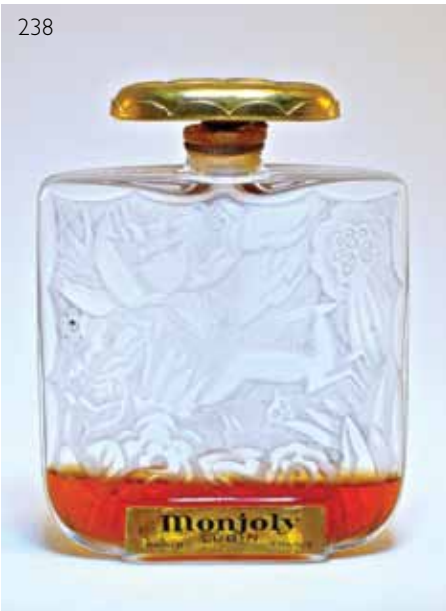
**235** 1928 Baccarat, D'Orsay *Toujours Fidele* perfume bottle, clear crystal, enameled label, frost figural stopper; sepia patina, box. 2 3/4 in.  
\$600-\$800

**236** 1929 Viville *Coeur de L'Ete* perfume bottle, frost glass, figural stopper; gilt clear glass. 3 1/4 in.  
\$650-\$850

**237** 1921 J.Viard, Lubin *Magda* perfume bottle, clear glass, gilt label, figural gilt and frost stopper. 5 1/4 in.  
\$2,000-\$2,500



238



239



238 1928 Lubin *Monjoly* perfume bottle, clear/frost glass, gilt stopper; label. 3 1/2 in.

\$750-\$950

239 1917 Baccarat, *Mury Jasmin* perfume bottle and stopper; clear crystal, blue enamel detail. Baccarat mark. 3 in.

\$550-\$650

240 1929 J.Viard – Depinoix, *Marques de Elorza Marche Nuptiale* perfume bottle and stopper; clear glass, frost panel of cupid with a bride, green and sepia patina, molded labeling. 4 3/4 in.

\$4,000-\$5,000

241 1923 Richard Hudnut *Fleur a Vous* perfume bottle and stopper; clear glass, gilt detail, label, tassel box. 2 5/8 in.

\$450-\$550

242 1925 J.Viard, *Carege* perfume bottle and stopper; black glass, gilt detail. Unique plastic box by Eduard Fornells. 2 3/4 in.

\$3,000-\$4,000

240



241



242



243



**243** 1927 A. Jollivet, Pleville *Plaisir d'Orient* perfume bottle, opaque green glass (dragon molded on reverse), gilt glass stopper, label, drawer-slide box (missing tassel). Molded Jollivet mark. 3 1/4 in. \$500-\$800

**244** 1928 Baccarat, D'Orsay *Toujours Fidele* perfume bottle, clear crystal, frost stopper; molded label. Baccarat mark. 3 1/2 in. \$350-\$450

244



245



**245** 1920s Nestlé *Chypre* perfume bottle, clear glass, opal glass stopper; label, box (worn). 4 1/4 in. \$200-\$400

**246** 1950 Caron *Or et Noir* perfume bottle, clear crystal, gilt stopper; cord sealed, bottom label, box. 4 1/4 in. \$450-\$550

**247** 1930s Crystal Nancy, Jean Patou *Moment Supreme* cologne bottle, opaque green crystal, green crystal stopper; label. 6 1/4 in. \$200-\$300

246



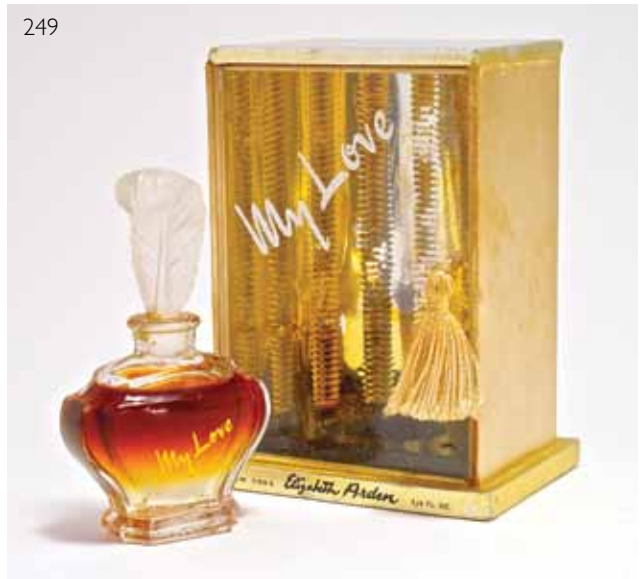
247



248



249



250



**248** 1935 Weil *Cassandra* perfume bottle and stopper; clear glass, cord sealed, label, box. 2 7/8 in.  
\$100-\$200

**249** 1949 Elizabeth Arden *My Love* figural perfume bottle, clear glass, gilt label, frost stopper; box. 3 1/4 in.  
\$300-\$400

**250** 1946 Charles of the Ritz *Directoire* perfume bottle and stopper; clear glass, gilt labels, box. 3 5/8 in.  
\$200-\$400

252

**251** 1926 Baccarat, Caron *Le Pois de Senteur de Chez Moi* perfume bottle, clear crystal, enameled stopper, cord sealed, label, box. Baccarat mark. 5 3/4 in.  
\$300-\$400

**252** 1953 Elizabeth Arden *Memoire Cherie* perfume bottle and cover, frost glass, inner stopper (side chip), hangtag label. 7 in.  
\$2,500-\$3,000

251





**253** 1945 Pierre Dune *Pres du Coeur* perfume bottle, clear glass, gilt stopper; applied glass panel with slide-out picture. Painted wood frame case with plastic back, paper label. Bottle 3 3/8 in. \$3,500-\$4,000

**254** 1957 Schiaparelli *Si* perfume bottle, clear glass, gilt and enameled detail, enameled stopper; molded label on ribbon. 4 3/4 in. \$450-\$650



254



**255** 1940s Pauline Trigere *J'Arrive* perfume bottle and stopper, clear/frost glass, molded label. Length 4 in. \$800-\$1,000

**256** 1928 Lenthéric *Asphodele* perfume bottle, clear glass, silver gilt and enamel stopper; hangtag label, box. 2 3/4 in. \$350-\$450

255



256



257



**257** 1920s Vigny Golliwogg "Good Luck" perfume pin, enameled metal, screen on back to hold cotton wool. Original card. Width 1 1/8 in. \$400-\$600

**260** 1920s Richard Hudnut *Le Debut* perfume bottle, black glass, gilt stopper; 2 labels, with matching enameled metal compact, box. Bottle 2 in. \$350-\$450

**258** 1940 Baccarat, Caron *With Pleasure* perfume bottle and stopper; clear crystal, gilt label and detail, cord sealed, box. Baccarat mark. 3 1/2 in. \$500-\$600

**261** 1938 Baccarat, Elizabeth Arden *Cyclamen* perfume bottle, white crystal, gilt detail and labeling, clear crystal feet and matching facet cut stopper; jeweled metal brooch at neck. Baccarat mark. 5 1/4 in. \$2,000-\$3,000

**259** 1926 Baccarat, Guerlain *Vega* perfume bottle and stopper; clear crystal, cord sealed, label, box. Baccarat mark. 3 in. \$950-\$1,250



259

258



261



260



262



**262** 1940s Chanel *Gardenia* perfume bottle and stopper; clear glass, labels, box. 3 5/8 in.  
\$300-\$400

**263** 1980 Estee Lauder "Collector's Bottle" for 1980, *Private Collection* perfume bottle and stopper; clear/frost crystal, cord sealed, bottom label, box. 4 1/8 in.  
\$100-\$200

**264** 1935 Lucien Lelong *Indiscret* perfume bottle and stopper; frost glass, cord sealed, 2 labels, box. 8 1/4 in.  
\$350-\$450

263



**265** 1930's Baccarat design, D'Orsay *Toujours Fidele* perfume bottle and stopper; clear glass, label, box. 2 in.  
\$100-\$200

**266** 1940s Forvil *Les Yeux Doux* perfume bottle and cover; clear glass, inner stopper; cord sealed, label, box. 2 1/4 in.  
\$100-\$150

**267** 1925 Corday *Jet* perfume bottle, clear glass, black stopper; label, silk box. 2 1/2 in.  
\$100-\$200

264



265



266



267



268



269

**268** 1930s Molinard *Habanita* perfume bottle and stopper, clear glass, molded and paper labels, box. 4 1/2 in.  
\$100-\$200

**271** 1924 *Suzanne Secret de Suzanne* perfume bottle and stopper, clear glass, cord sealed, box (worn). 2 3/4 in.  
\$100-\$150

270



**269** 1944 *Hattie Carnegie No. 7* figural perfume bottle and stopper, clear glass, gilt label and detail, fabric box. 2 1/2 in.  
\$200-\$300

**272** 1940 *Chanel Le 1940 Bleu de Chanel* perfume bottle, glass, frost stopper, label. Chanel-France molded on base. 2 3/4 in.  
\$800-\$1,000

271



272





273



274



275



276

**273** 1960s Mary Chess sampler; 6 figural glass bottles, gilt metal covers, brocade evening purse case. Tallest 3 in. \$250-\$300

**274** 1930s Karoff "Essence of Knowledge" 5 scents, glass bottles, wooden screw caps, fabric, (one heart label missing), box. Bottle 2 3/4 in. \$100-\$150

**275** 1950s Coty *L'Aimant* perfume presentation, clear glass bottle, frost stopper; sealed, label. Plastic display. Bottle 1 5/8 in. \$100-\$200

**276** 1950s Coty perfume set, 4 clear glass bottles, frost stoppers, 3 sealed, labels, wooden toboggan. Bottles 1 5/8 in. \$350-\$450

**277** 1960s Hallmark Valentine card, with Lanvin *Arpege* perfume sample, glass, metal screw cap, sealed in greeting card, box. 2 in. \$75-\$100



277



278



**278** 1947 Dorothy Gray *Savoir Faire* purse perfume, glass bottle and stopper; enameled brass holder (scratches), box. Swivels like a lipstick. 2 in.  
\$250-\$300

279



**279** 1940s Lanselle *Les 4 As (The 4 Aces)* perfume sampler; glass bottles and stoppers, sealed, each label a card suit image and name, box (worn). 2 3/8 in.  
\$50-\$100

**280** 1949 Lucien Lelong *Cachet* perfume bottle and stopper; clear/frost glass, elaborate fabric box with poem inside scrolling flap. 6 in.  
\$350-\$450



280

**281** 1920s Pillet *As de Piquet* sachet, clear glass bottle and stopper; enameled molded detail, paper labels. 3 in.  
\$100-\$200

**282** 1953 Jacques Griffe *Mistigri* perfume bottle and stopper; clear glass, enameled labels, cord sealed. Drawer-slide box as a deck of cards. 3 in.  
\$200-\$400

281



282



283



**283** 1935 Richard Hudnut Gemey perfume bottle and stopper, clear glass, label, box. 2 3/4 in. \$100-\$200

**284** 1930s Coty *Emeraude* perfume bottle, clear glass, frost stopper, cord sealed, label, box. 2 1/2 in. \$100-\$150

**285** c1940 City of Paris *Recamier* perfume bottle, clear glass, frost stopper, cord sealed, label, box. For the San Francisco luxury dept. store. 3 1/4 in. \$100-\$200

286



**286** 1942 Charles of the Ritz *Love Potion* perfume bottle, clear glass, gilt stopper, cord sealed, label, box. 6 1/4 in. \$600-\$800

**287** 1951 Bienaime *Jours Heureux* perfume bottle, frost stopper, cord seal, labels, box. 5 1/4 in. \$400-\$600

284



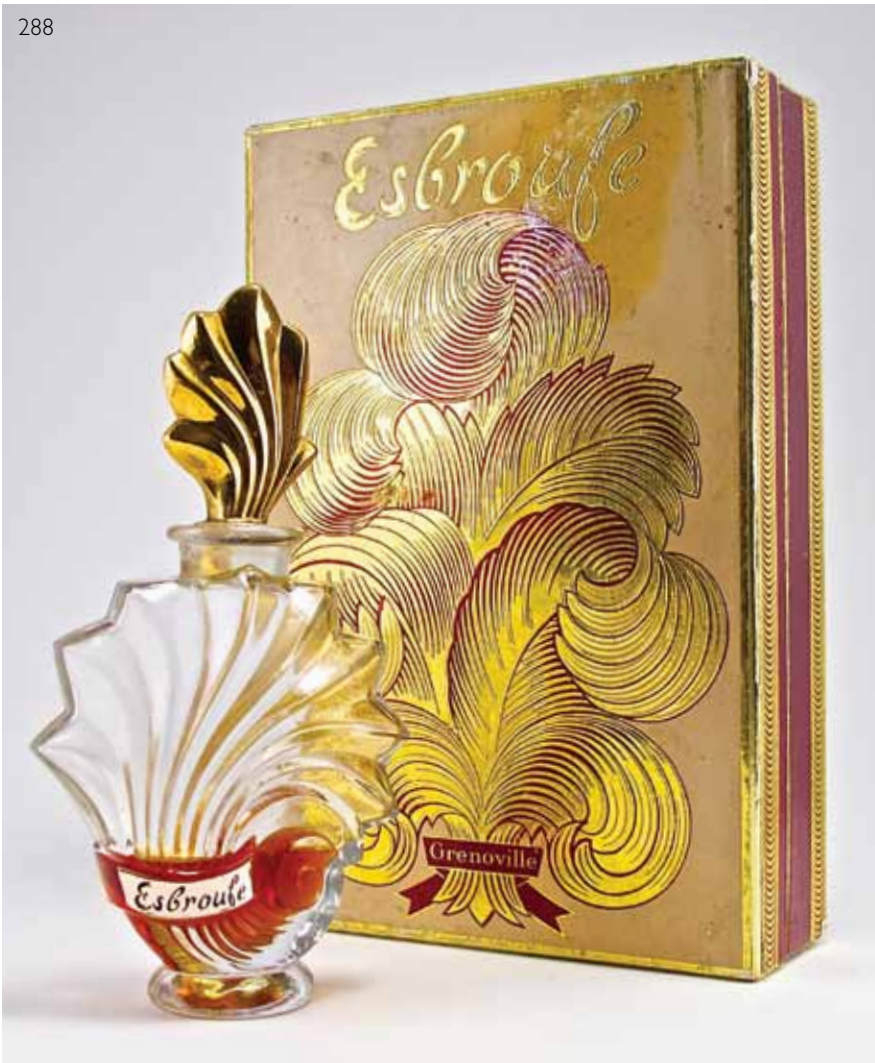
285



287



288



**288** c1940 Grenoville *Esbroufe* perfume bottle, clear glass, gilt stopper, label, box (exterior scuffing). 5 3/4 in.  
\$400-\$600

**289** 1948 Coty *Muse* perfume bottle, clear glass, frost cover, inner stopper, cord sealed, label, box. 3 1/4 in.  
\$200-\$400

**290** 1939 Lucien Lelong *Jabot* perfume bottle and cover, clear/frost glass, inner stopper; cord sealed, 2 labels, box. 3 in.  
\$300-\$400

**291** 1928 Volnay *Jonchee de Pois de Senteur* perfume bottle and stopper; clear glass, gilt recessed lines, label, box (worn). 4 in.  
\$100-\$200

**292** 1940s Houbigant *Quelques Fleurs* perfume bottle and stopper; clear glass, label, box. 3 in.  
\$100-\$200

289



290



291



292



293



**293** 1939 Saravel *Morocco* perfume bottle, clear glass, metal cap and screw cap, molded labels, box (interior wear). 1 3/4 in.  
\$200-\$300

**294** 1950s Goya *Number 5*, *Gardenia 2* glass bottles, plastic screw caps, labels, pop-up box. 1 5/8 in.  
\$250-\$350

294



**295** 1920s Prince Matchabelli perfume bottle, opaque blue crystal, gilt detail, tiny chip on cross. Marked Germany. 3 3/4 in.  
\$350-\$450

**296** 1938 Molinard *Les Diamants de la Couronne* presentation, 5 purse perfume solids, plastic, labels, box. 1 in.  
\$500-\$600

**297** 1936 Borsari *Lavanda Alpina* perfume bottle, glass, plastic screw cap, metal fittings and holder; plastic base. Marked Casalmaggiore. Casal was center of Italian plastic production. 7 in.  
\$650-\$850

295



296



297





**298** 1958 Prince Matchabelli *Wind Song* factice size perfume bottle, gilt and enamel on clear glass, filled with perfume, sealed, bottom label, fabric pouch. 8 1/4 in.  
 \$2,500-\$3,000

**News clipping reads:** "Mrs. Vera Kieborth sniffs the 47-ounce bottle of "Wind Song" perfume which she won in a drawing sponsored by the Mabley & Carew Co., J.D. Mullally, Mabley's president, presents the bottle, one of only two in the world."

298



# Perfume Bottles Auction

*Directed by Ken Leach*  
Auctioneer: Nicholas Dawes

Ken Leach  
1050 2nd Ave. #47  
New York, NY 10022 USA  
p: 800-942-0550 f: 917-591-6645 e: ken@perfumbottlesauction.com  
[www.PerfumeBottlesAuction.com](http://www.PerfumeBottlesAuction.com)

*Thank you for participating in the Perfume Bottles Auction.  
We are currently welcoming consignments for our 2014 auction  
to be held at the 26th Annual IPBA Convention in Pittsburgh, PA.*

# Perfume Bottles Auction

Absentee Bid or  Telephone Bid

Registration Form May 3, 2013

Name		
Address		Apt. #
City	State	Zip
Day Phone	Evening Phone	
Cellular	Fax	
E-mail Address		
Numbers to Call for Phone Bidding: 1.		2.
Credit Card to Register: <input type="checkbox"/> VISA <input type="checkbox"/> MC #		Exp. Sec.
Name on Card	Signature	

**Please Note:** For new clients to register and bid, we request a copy of current driver's license and completion of our credit information form. *For phone bidding, the low estimate must be at least \$500 and you must be willing to bid at least up to the low estimate.* Your bid does not include the 20% buyer's premium or any shipping charges. *Absentee and phone bids must be submitted 48 hours prior to the auction.* We will confirm your bids within 24 hrs by fax.

Lot	Description	Bid Amount

I understand that Perfume Bottles Auction undertakes the execution of absentee bids as a convenience for clients and is not liable for any errors or non-executed bids. I have read and agree to the Conditions of Sale and understand that the items sold are of considerable age and varying condition, and that all lots are sold "as is." I understand there is a 20% buyer's premium on all purchases.

*Signature is required to execute bids:* \_\_\_\_\_ Date: \_\_\_\_\_

Ken Leach

1050 2nd Ave. #47, New York, NY 10022 USA

p: 800-942-0550 f: 917-591-6645 e: ken@perfumebottlesauction.com

Personal Information

Name		
Address		
City	State	Zip
Home Phone		Driver's License Number
Home Fax		E-mail
Amount of credit requested		

Employer Information

Name of Company		
Address		
City	State	Zip
Position		
Business Phone		Fax Number

Bank Reference: \_\_\_\_\_

Contact: \_\_\_\_\_ Phone: \_\_\_\_\_

Account Number: \_\_\_\_\_

Auction House References: \_\_\_\_\_

In the event of nonpayment, your signature below is authorization for Ken Leach to charge your credit card.

VISA # \_\_\_\_\_ Expiration Month/Year \_\_\_\_\_

Mastercard # \_\_\_\_\_ Expiration Month/Year \_\_\_\_\_

American Express # \_\_\_\_\_ Expiration Month/Year \_\_\_\_\_

Card Holder's Signature: \_\_\_\_\_ Date: \_\_\_\_\_

Payments of cash, wire transfer, certified check or money order are accepted. All property must be paid for and picked up within three days of the auction. Unless you have previously established credit or made payment arrangements, you will not be permitted to take delivery of your purchases until after credit has been established. Please allow one week for processing time.

Approved By: \_\_\_\_\_ Date: \_\_\_\_\_